

Umina

Supported Independent Living Vacancy



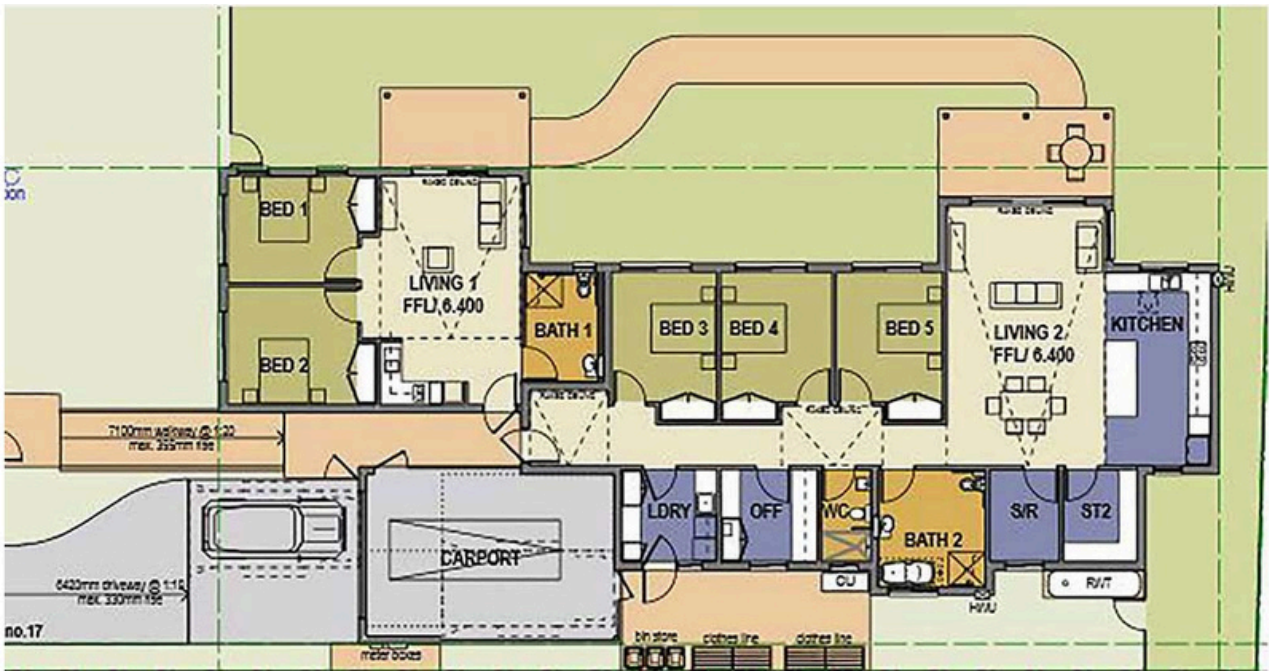
Modern, Light-Filled Supported Living in Coastal Umina

This new, wheelchair-friendly home offers spacious, light-filled living with 24/7 support in a Central Coast setting. Featuring open-plan interiors, accessible design, and a private room with garden views, residents can enjoy comfort, independence, and connection, with shared amenities, outdoor spaces, and a welcoming household environment.

Features

- 2-bedroom unit and 3-bedroom home
- Plenty of natural light throughout
- Open social spaces with modern finishes
- 24/7 support
- Shared vehicle
- Sunlit covered patio area





Surrounding area

Set just minutes from Umina Beach, this home offers easy access to local cafes, shops, Woolworths, Aldi and public transport. Nearby Ettalong features Cinema Paradiso, markets, waterfront walks and fishing spots, while Woy Woy station provides convenient rail connections to Sydney and Newcastle for outings or visits.



Makayla Johnson

0474 966 937

makayla.s.johnson@cerebralpalsy.org.au

