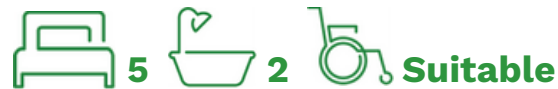


# Hornsby

Supported Independent Living Vacancy



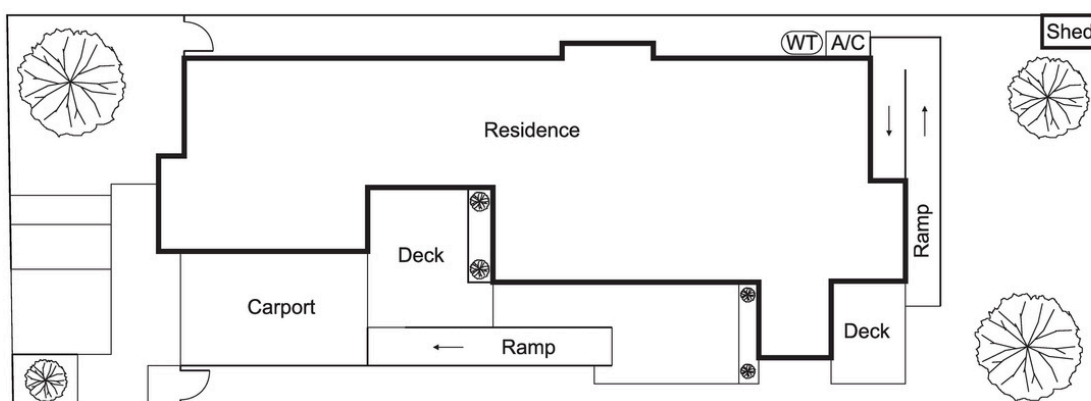
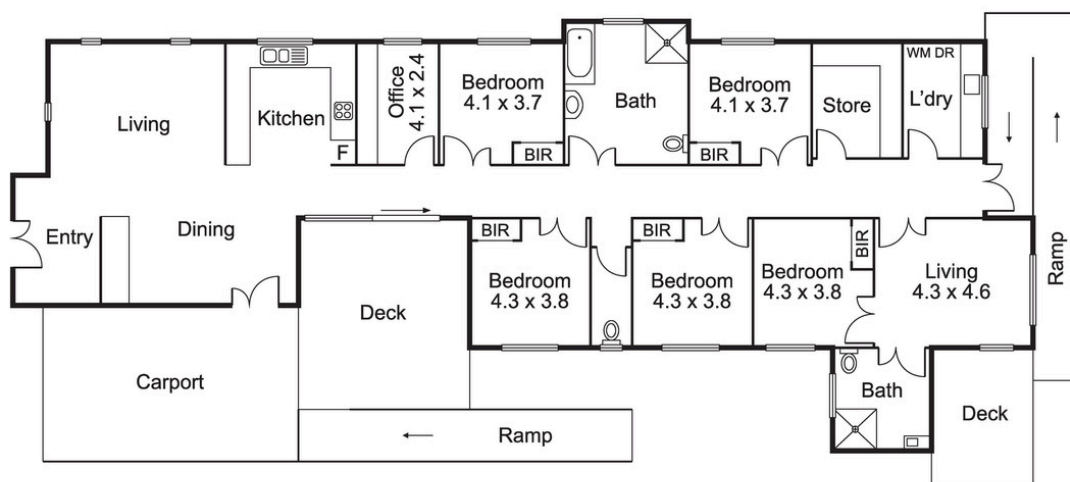
## Supported Living in the Heart of Hornsby

Discover a modern, single-level 5-bedroom home in Hornsby with Cerebral Palsy Alliance. Enjoy wheelchair-accessible open-plan living, two living areas, two bathrooms (one with ceiling hoist), air-conditioning, and secure front and back yards. A covered patio, landscaped gardens and shared vehicle support an active lifestyle, while 24/7 onsite support and proximity to shops, parks and transport offer comfort, safety and independence.

### Features

- Single-level modern brick home
- Spacious open plan living
- Ceiling hoist in bathroom
- Built-in wardrobe
- Covered outdoor entertaining area with BBQ
- 24/7 support
- Pet friendly





## Surrounding area

Located in a well-connected Hornsby neighbourhood, this home offers effortless access to transport, including nearby Asquith and Hornsby Train Stations and a bus stop just minutes away. Shopping at Westfield Hornsby and Asquith shops is close by, as is Hornsby Hospital. Residents can enjoy outdoor recreation in local parks or Ku-ring-gai Chase National Park, and relax or socialise at nearby clubs.



Makayla Johnson

0474 966 937

[makayla.s.johnson@cerebralpalsy.org.au](mailto:makayla.s.johnson@cerebralpalsy.org.au)

