

Normanhurst

Supported Independent Living Vacancy



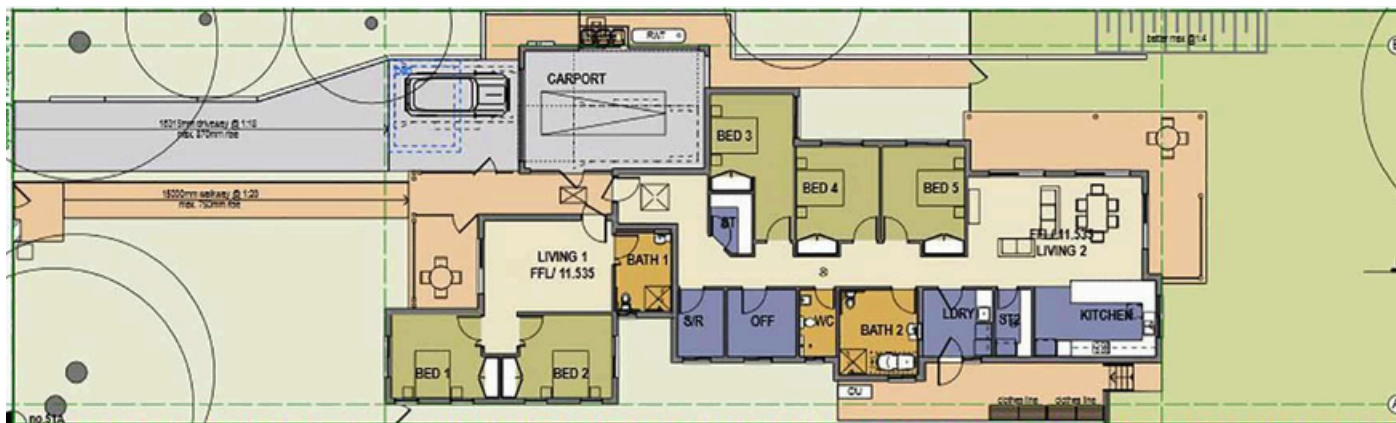
Modern, Accessible Home in Normanhurst

Discover a welcoming 5-bedroom home in a peaceful Normanhurst street, designed for comfort, independence, and connection. Divided into a two-bedroom villa and a three-bedroom house, each with its own living area and bathroom, this home offers both privacy and shared community living. Enjoy bright, open spaces, accessible features, beautiful gardens, a covered alfresco area, 24-hour support, and a shared vehicle for outings.

Features

- New custom-built home
- Divided into two-bedroom villa and three-bedroom house
- Open social spaces with living, dining & kitchen
- Undercover outdoor areas with secure backyard and garden
- 24/7 support
- Undercover carport with direct access to house





Surrounding area

Perfectly positioned for convenience and connection, this Normanhurst home is close to local shops in Thornleigh and Pennant Hills, with Normanhurst Train Station just minutes away. Parks and green spaces are within a short five-minute drive, while Westfield Hornsby, restaurants, and cinemas are under 10 minutes from home. The M1 offers easy travel north, and nearby hospitals provide added peace of mind.



Makayla Johnson

0474 966 937

makayla.s.johnson@cerebralpalsy.org.au

