

Granville

Supported Independent Living Vacancy

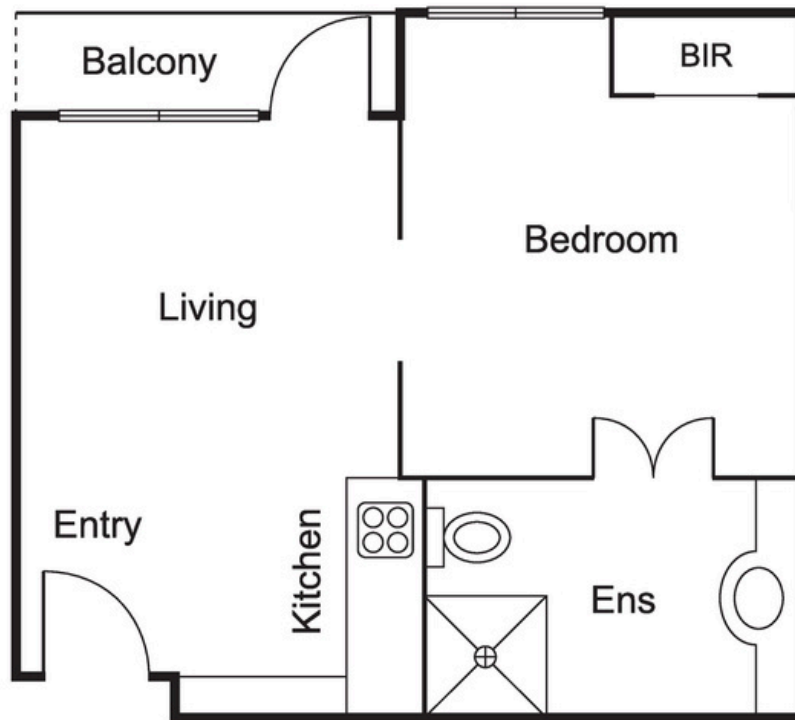


Live Your Way in Modern, Accessible SIL Units in Granville

Live independently in a custom-built, single-level SIL residence in South Granville, offering 12 private, wheelchair-friendly units, each equipped with their own bedroom, ensuite, kitchenette, and lounge. Enjoy 24/7 support, modern décor, two communal living zones, a covered alfresco for BBQs, air conditioning, shared vehicle access, and secure fenced grounds - all close to shops, buses, and Granville Station.

Features

- Twelve self-contained units with own bedroom, ensuite, kitchenette and lounge
- Two communal living zones
- Wide doorways and automatic entry doors
- 24/7 support
- Covered alfresco area



Surrounding area

Set in a well-connected Granville neighbourhood, this location offers everyday convenience with local shops and buses just around the corner and Granville Station close by. Auburn Botanic Gardens and nearby parks are only minutes away, while the area's many food outlets provide endless dining options. Merrylands Shopping Centre is within easy reach, and Sydney Olympic Park is just a short drive for additional recreation.



Makayla Johnson

0474 966 937

makayla.s.johnson@cerebralpalsy.org.au

