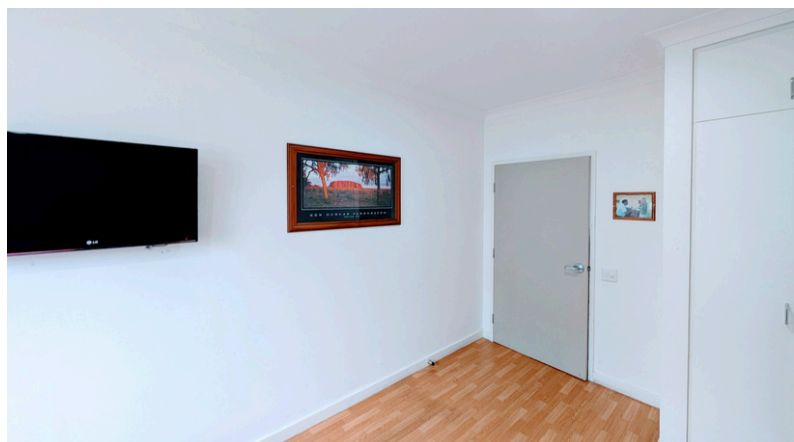
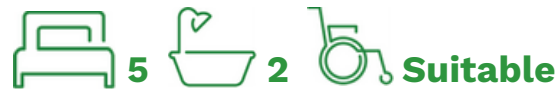


Asquith

Supported Independent Living Vacancy



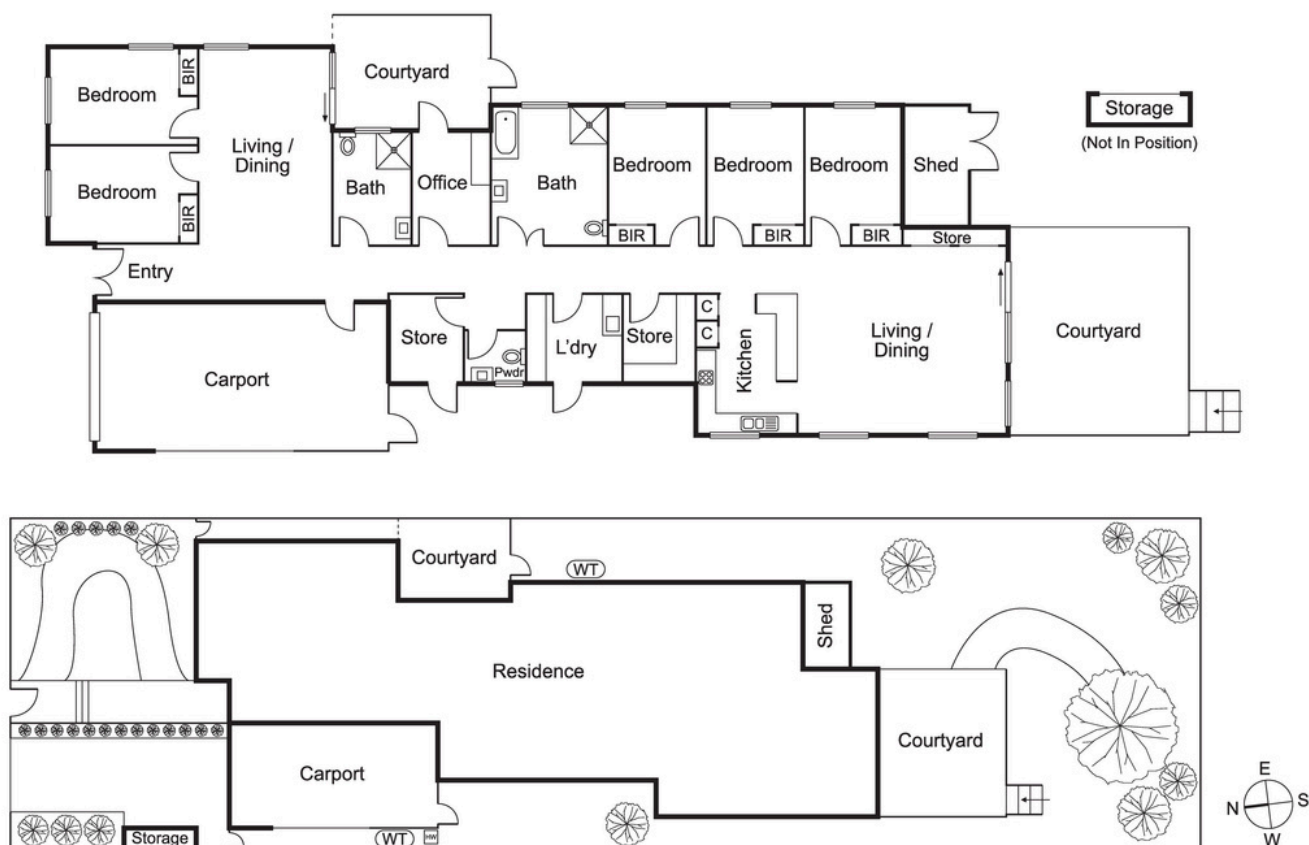
Independent Living with Support in Asquith

Discover a spacious, wheelchair-accessible 5-bedroom home in Asquith with Cerebral Palsy Alliance. With two living areas, two bathrooms, and an open-plan kitchen leading to a spacious undercover patio and BBQ area, this home is ideal for entertaining or enjoying time outdoors. The single-level design offers ramp access and wide doorframes, while 24/7 care and a shared vehicle support an independent and connected life.

Features

- Full-sized kitchen with open plan living and dining areas
- Ramp access and wide doorframes
- Air conditioning
- Undercover outdoor living/entertainment area
- 24/7 support
- Well-connected location





Surrounding area

Nestled on a quiet Asquith street, this home combines tranquillity with convenience. Enjoy easy travel via nearby train and bus services, or explore local shops at Asquith Village and Hornsby Westfield. Outdoor enthusiasts will love nearby Mills Park and Ku-ring-gai Chase National Park. With cafés, specialty stores, and Hornsby Ku-ring-gai Hospital just minutes away, everything you need is within reach.



Makayla Johnson

0474 966 937

makayla.s.johnson@cerebralpalsy.org.au

