

# Beacon Hill

Supported Independent Living Vacancy



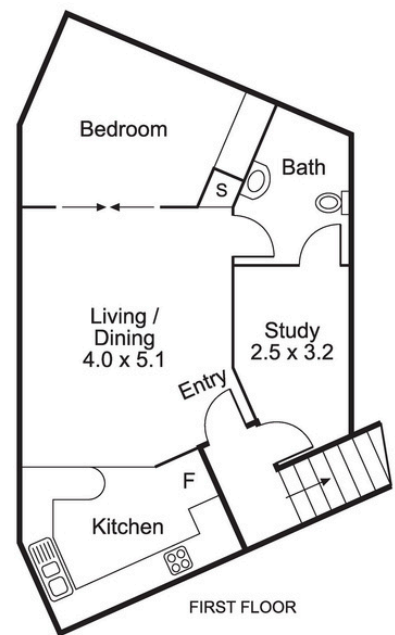
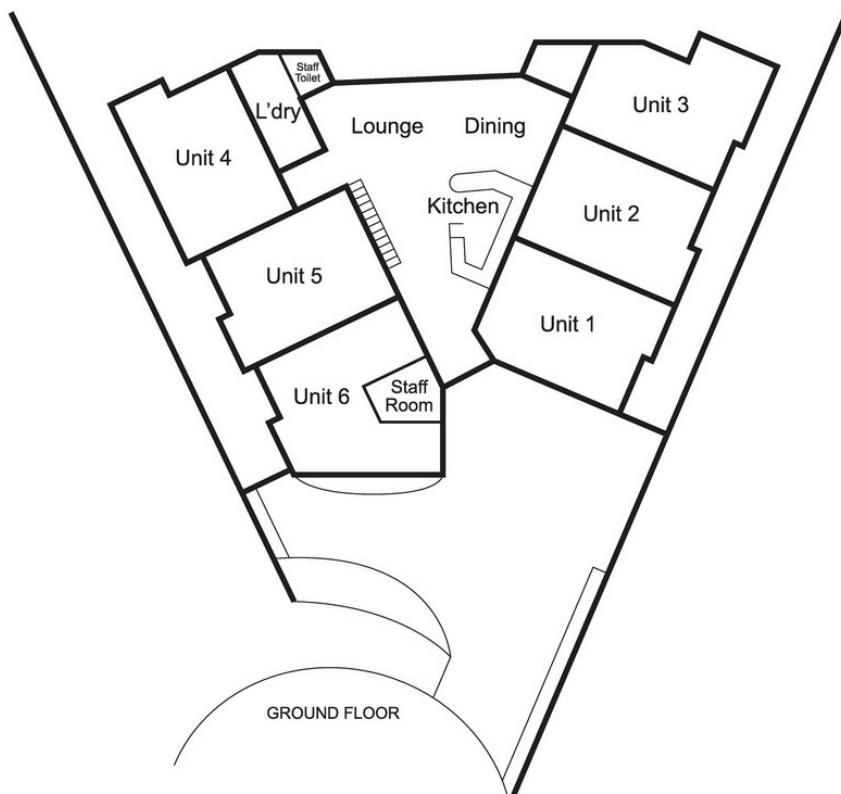
## Private, Supported Living Units in Beacon Hill

Enjoy independent living in a wheelchair-accessible, six-unit home in Beacon Hill featuring your own kitchenette, ensuite, and built-in wardrobe. Share a spacious open-plan kitchen, dining and living area, with 24/7 support and a friendly, communal atmosphere. This home is pet-friendly, and delivers comfort with air-conditioning, automatic doors, a secure backyard, undercover BBQ patio and shared vehicle.

### Features

- Six self-contained units with own kitchenette and ensuite
- Shared open-plan living areas
- Air conditioning
- Undercover patio and BBQ area
- 24/7 support
- Pet friendly





## Surrounding area

Beacon Hill offers calm, residential living with convenient access to shops, cafés and services. Warringah Mall and Westfield Chatswood are a short drive away, while nearby Forestville Reserve and Garigal National Park provide scenic bushwalks and peaceful green spaces. Curl Curl and Dee Why beaches offer relaxed coastal outings, and Northern Beaches Hospital ensures healthcare support is always close at hand.



Makayla Johnson

0474 966 937

[makayla.s.johnson@cerebralpalsy.org.au](mailto:makayla.s.johnson@cerebralpalsy.org.au)

