

Marsfield

Supported Independent Living Vacancy



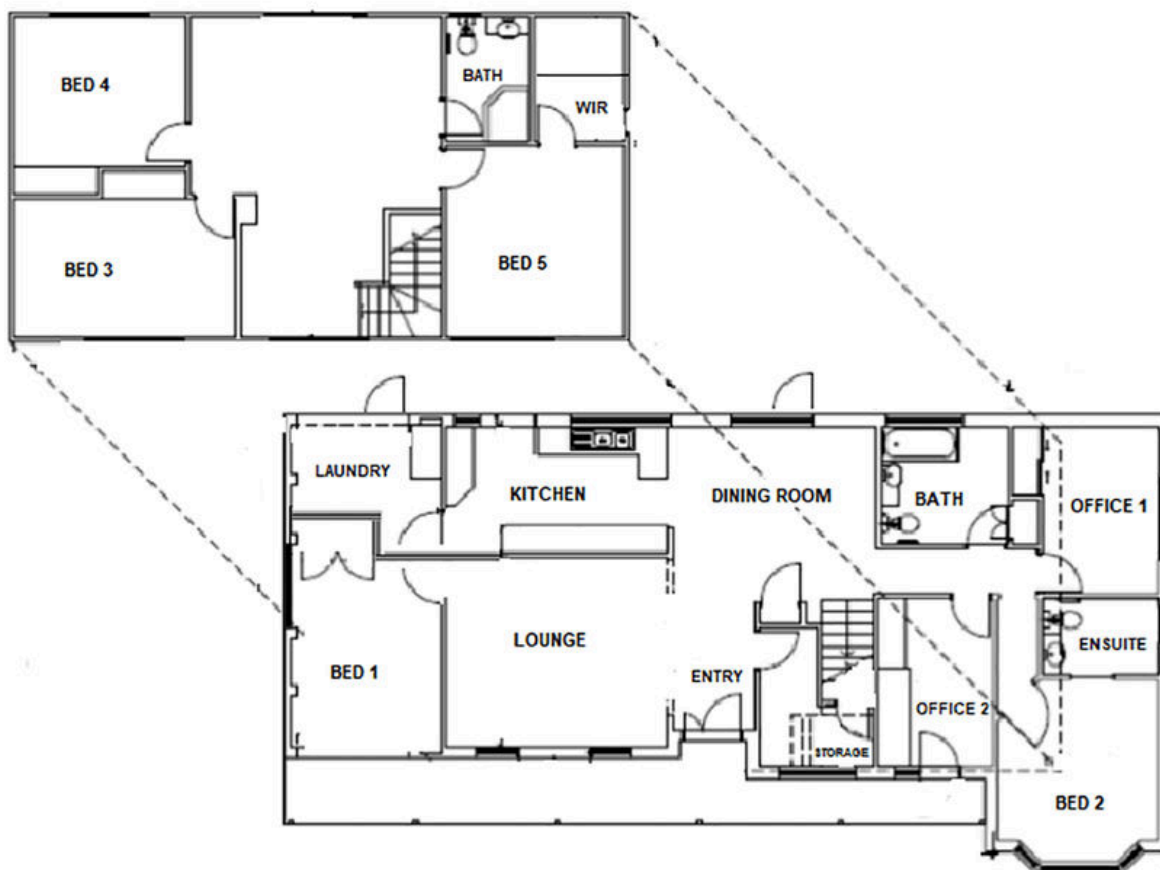
Convenient, Social Living in the Heart of Marsfield

Set just moments from Macquarie Centre and public transport, this refreshed two-storey shared SIL home offers a welcoming environment with 24/7 support. Featuring spacious living areas, two bathrooms, a bright kitchen, and a secure backyard with covered patio, it's ideal for a social, independent resident seeking community connection.

Features

- Spacious two-storey home with five bedrooms and open plan layout
- Secure fenced backyard
- Shared vehicle
- Covered patio with BBQ area
- 24/7 support





Surrounding area

Enjoy a well-connected lifestyle in Marsfield, just a short stroll to Minimbah Day Program and nearby local shops. With easy access to Eastwood and Epping, plus quick transport to Macquarie Centre, cinemas and trains, you're also close to parks, Ryde Hospital and Epping Aquatic Centre for recreation and convenience.



Makayla Johnson

0474 966 937

makayla.s.johnson@cerebralpalsy.org.au

